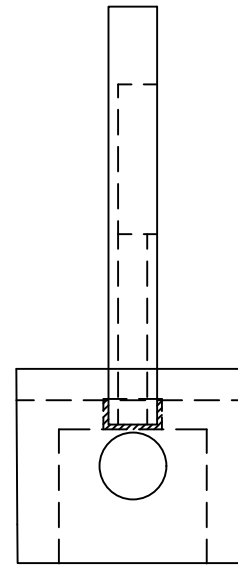
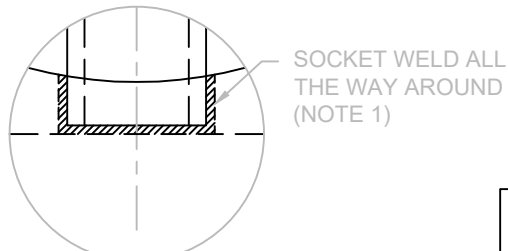


**TOP VIEW**



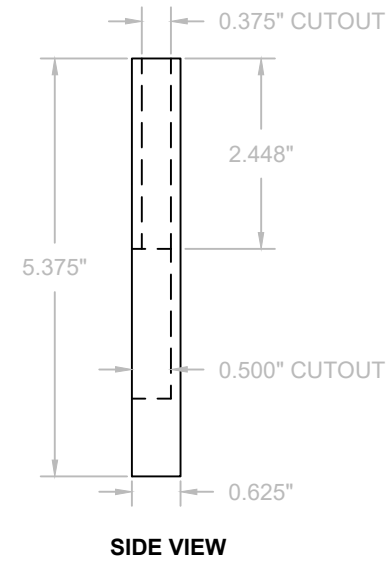
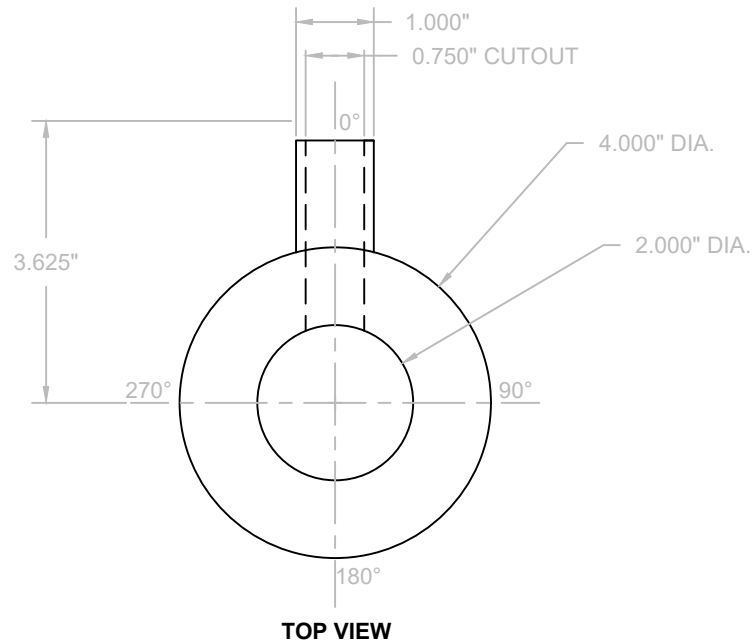
**SIDE VIEW**



**DETAIL A**

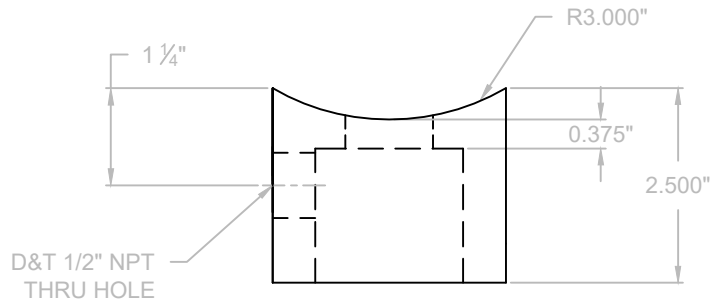
- NOTES**
1. WELD MUST NOT PROTRUDE PAST RADIUS

<b>MATERIAL: CARBON STEEL</b>			
1	21.06.25	MP	FOR QUOTATION
<b>REV</b>	<b>DATE</b>	<b>BY</b>	<b>DESCRIPTION</b>
<small>THIS DOCUMENT CONTAINS CONFIDENTIAL AND PROPRIETARY INFORMATION THAT CANNOT BE REPRODUCED, DIVULGED, OR MANUFACTURED, IN WHOLE OR IN PART, WITHOUT WRITTEN AUTHORIZATION FROM VITAL INDUSTRIAL SOLUTIONS.</small>			
<b>DESCRIPTION</b>			
2" 150# CONTAINMENT SYSTEM TOOL ASSEMBLY			
<b>DWG. NO.</b>	<b>PART</b>	<b>SCALE</b>	<b>SHEET</b>
CS-2-150	-	NTS	1 OF 3

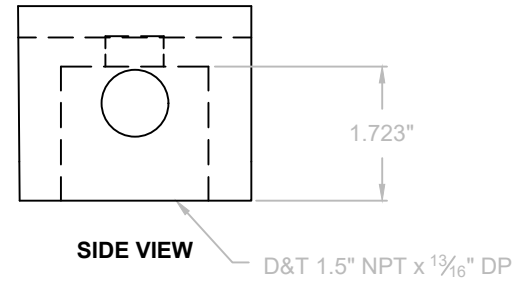


MATERIAL: CARBON STEEL

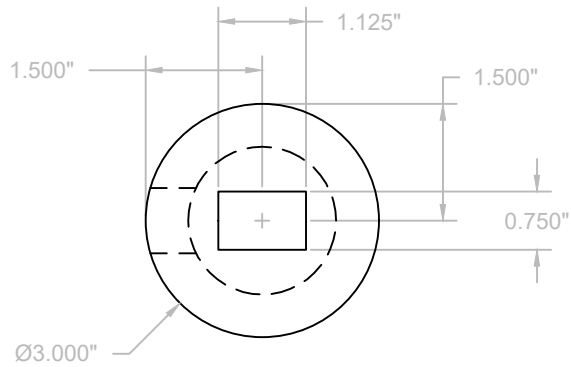
REV	DATE	BY	DESCRIPTION
1	21.06.25	MP	FOR QUOTATION
<small>THIS DOCUMENT CONTAINS CONFIDENTIAL AND PROPRIETARY INFORMATION THAT CANNOT BE REPRODUCED, DIVULGED, OR MANUFACTURED, IN WHOLE OR IN PART, WITHOUT WRITTEN AUTHORIZATION FROM VITAL INDUSTRIAL SOLUTIONS.</small>			
<b>DESCRIPTION</b> 2" 150# CONTAINMENT SYSTEM TOOL SPADE			
<b>DWG. NO.</b>	<b>PART</b>	<b>SCALE</b>	
CS-2-150	CS-2-150-SP	NTS	2 OF 3




**TOP VIEW**

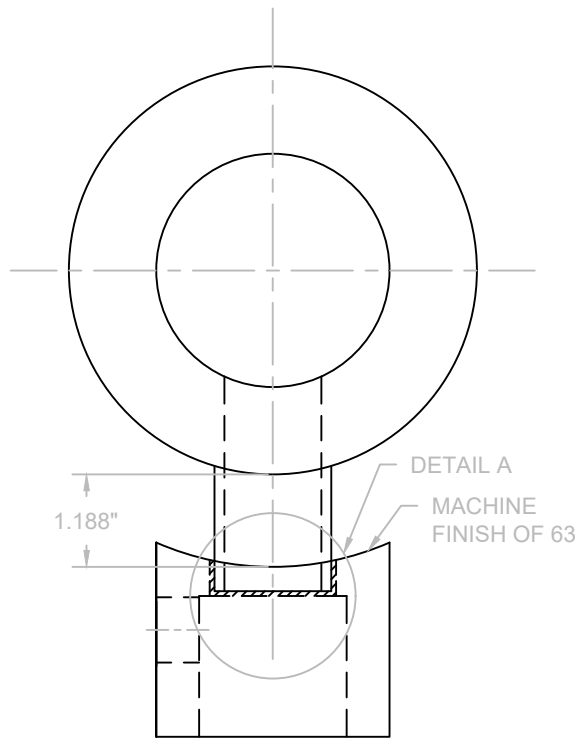


**SIDE VIEW**

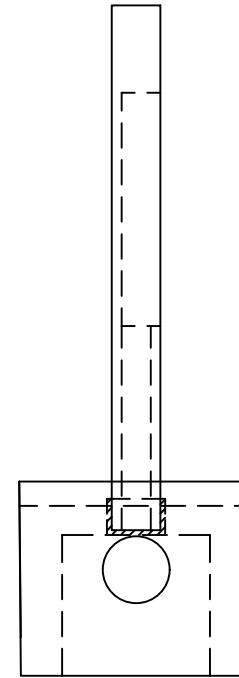


**END VIEW**

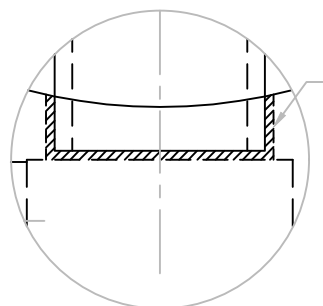
MATERIAL: CARBON STEEL			
1	21.06.25	MP	FOR QUOTATION
REV	DATE	BY	DESCRIPTION
THIS DOCUMENT CONTAINS CONFIDENTIAL AND PROPRIETARY INFORMATION THAT CANNOT BE REPRODUCED, DIVULGED, OR MANUFACTURED, IN WHOLE OR IN PART, WITHOUT WRITTEN AUTHORIZATION FROM VITAL INDUSTRIAL SOLUTIONS.			
DESCRIPTION			
2" 150# CONTAINMENT SYSTEM TOOL BLOCK			
DWG. NO.	PART	SCALE	SHEET
CS-2-150	CS-2-150-B	NTS	3 OF 3



**TOP VIEW**



**SIDE VIEW**



**DETAIL A**

SOCKET WELD ALL THE WAY AROUND (NOTE 1)

**NOTES**

1. WELD MUST NOT PROTRUDE PAST RADIUS

**MATERIAL: CARBON STEEL**

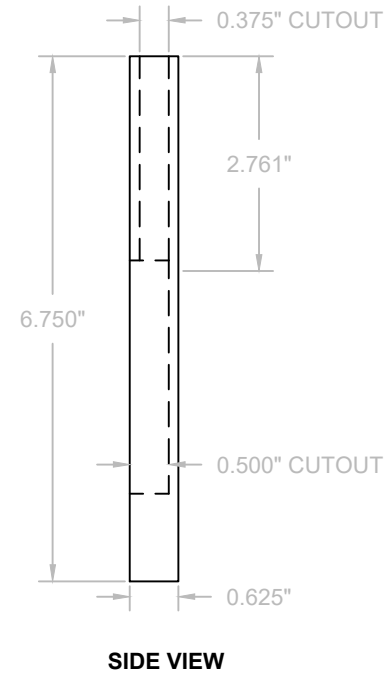
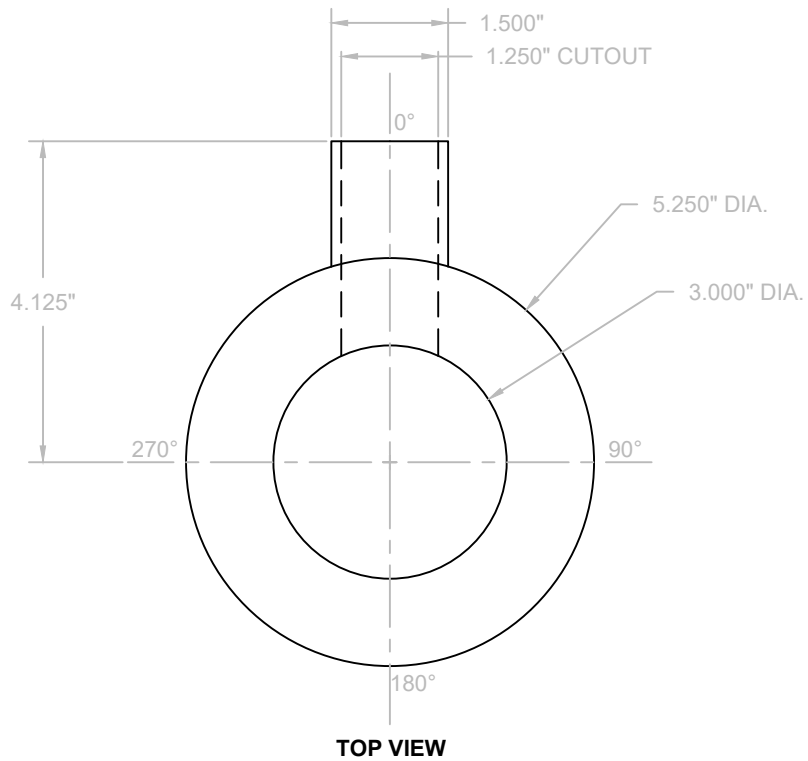
1	21.06.25	MP	FOR QUOTATION
REV	DATE	BY	DESCRIPTION

THIS DOCUMENT CONTAINS CONFIDENTIAL AND PROPRIETARY INFORMATION THAT CANNOT BE REPRODUCED, DIVULGED, OR MANUFACTURED, IN WHOLE OR IN PART, WITHOUT WRITTEN AUTHORIZATION FROM VITAL INDUSTRIAL SOLUTIONS.

**DESCRIPTION**  
3" 150# CONTAINMENT SYSTEM TOOL ASSEMBLY

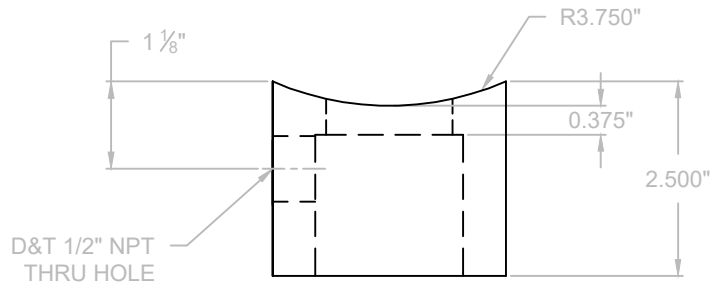


<b>DWG. NO.</b> CS-3-150	<b>PART</b> -	<b>SCALE</b> NTS	<b>SHEET</b> 1 OF 3
-----------------------------	------------------	---------------------	------------------------

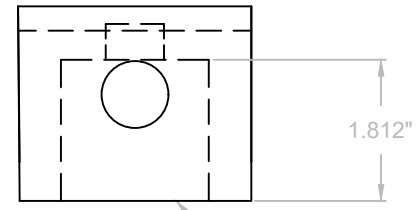


MATERIAL: CARBON STEEL

REV	DATE	BY	DESCRIPTION
1	21.06.25	MP	FOR QUOTATION
<small>THIS DOCUMENT CONTAINS CONFIDENTIAL AND PROPRIETARY INFORMATION THAT CANNOT BE REPRODUCED, DIVULGED, OR MANUFACTURED, IN WHOLE OR IN PART, WITHOUT WRITTEN AUTHORIZATION FROM VITAL INDUSTRIAL SOLUTIONS.</small>			
<b>DESCRIPTION</b> 3" 150# CONTAINMENT SYSTEM TOOL SPADE			
<b>DWG. NO.</b>	<b>PART</b>	<b>SCALE</b>	
CS-3-150	CS-3-150-SP	NTS	2 OF 3

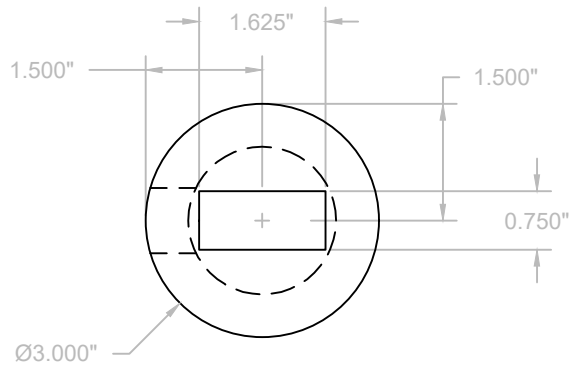


**TOP VIEW**



**SIDE VIEW**

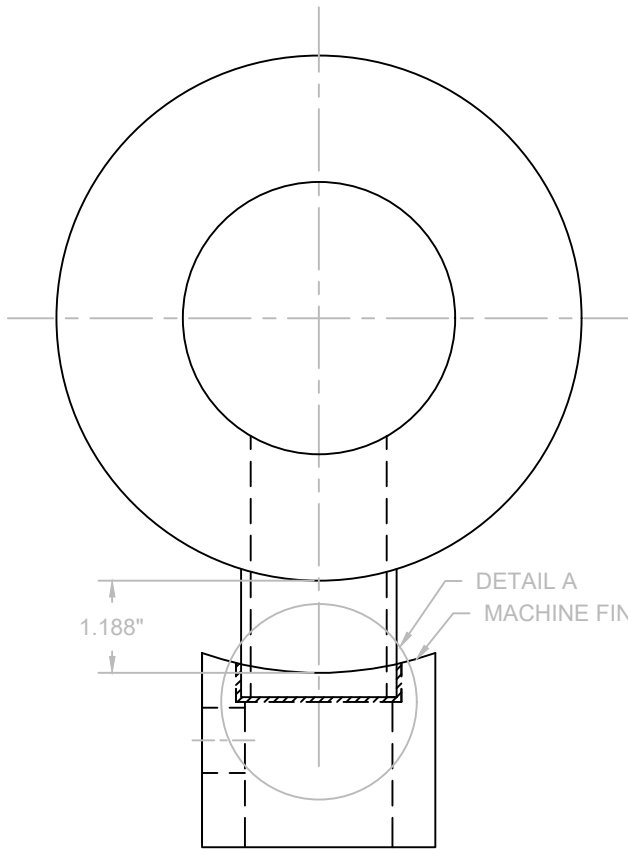
D&T 1.5" NPT x 29/32" DP



**END VIEW**

**MATERIAL: CARBON STEEL**

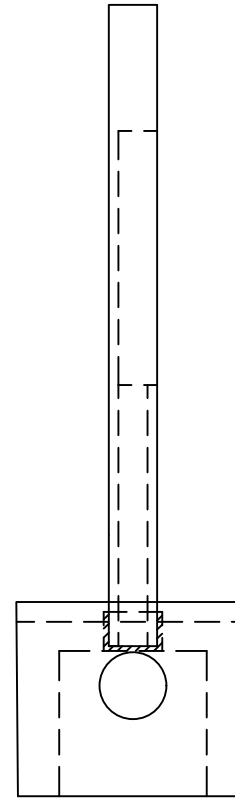
REV	DATE	BY	DESCRIPTION
1	21.06.25	MP	FOR QUOTATION
THIS DOCUMENT CONTAINS CONFIDENTIAL AND PROPRIETARY INFORMATION THAT CANNOT BE REPRODUCED, DIVULGED, OR MANUFACTURED, IN WHOLE OR IN PART, WITHOUT WRITTEN AUTHORIZATION FROM VITAL INDUSTRIAL SOLUTIONS.			
DESCRIPTION			
3" 150# CONTAINMENT SYSTEM TOOL BLOCK			
DWG. NO.	PART	SCALE	SHEET
CS-3-150	CS-3-150-B	NTS	3 OF 3



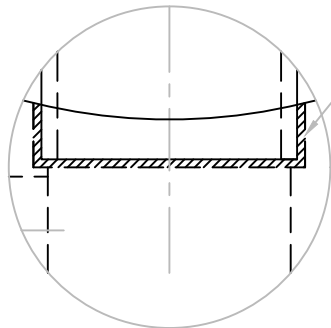
1.188"

DETAIL A  
MACHINE FINISH OF 63

TOP VIEW



SIDE VIEW



DETAIL A

SOCKET WELD ALL THE WAY AROUND (NOTE 1)

**NOTES**

1. WELD MUST NOT PROTRUDE PAST RADIUS

MATERIAL: CARBON STEEL

1	21.06.25	MP	FOR QUOTATION
REV	DATE	BY	DESCRIPTION

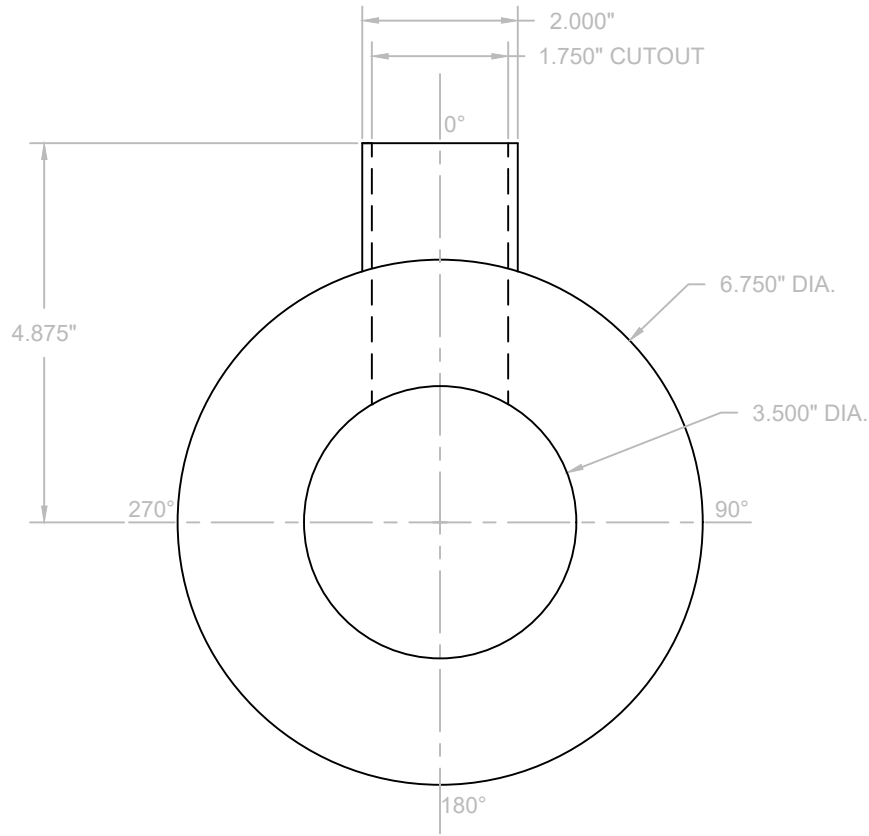
THIS DOCUMENT CONTAINS CONFIDENTIAL AND PROPRIETARY INFORMATION THAT CANNOT BE REPRODUCED, DIVULGED, OR MANUFACTURED, IN WHOLE OR IN PART, WITHOUT WRITTEN AUTHORIZATION FROM VITAL INDUSTRIAL SOLUTIONS.

**DESCRIPTION**

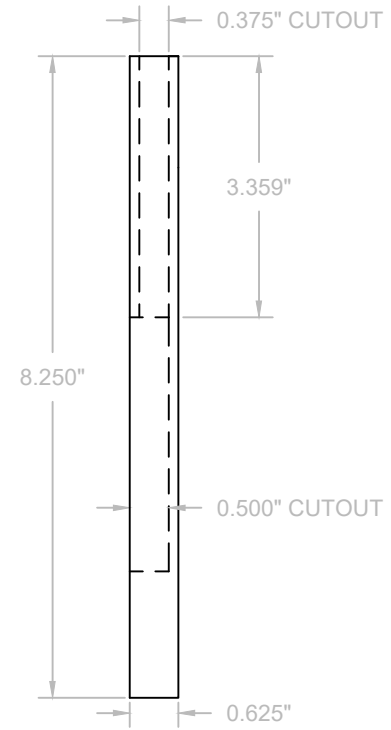
4" 150# CONTAINMENT SYSTEM TOOL ASSEMBLY



DWG. NO.	PART	SCALE	SHEET
CS-4-150	-	NTS	1 OF 3



TOP VIEW

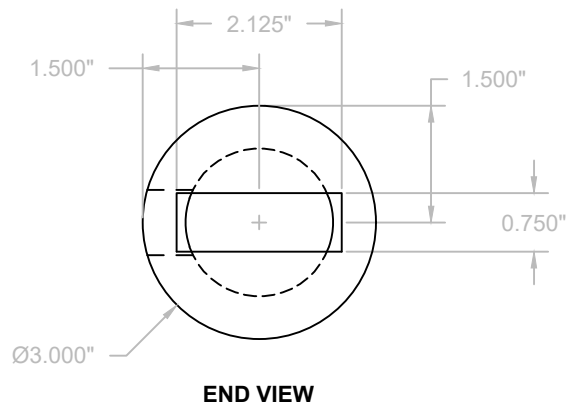
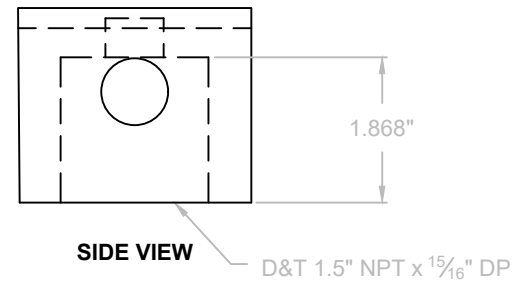
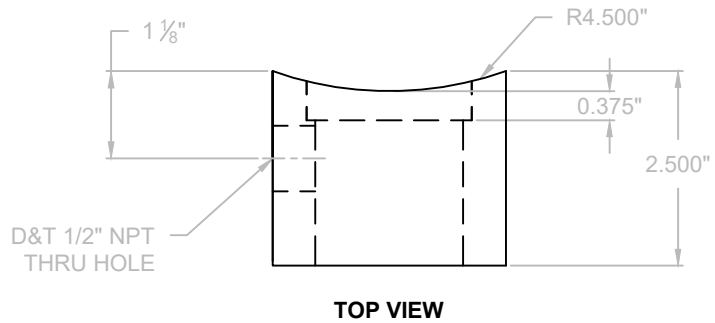


SIDE VIEW

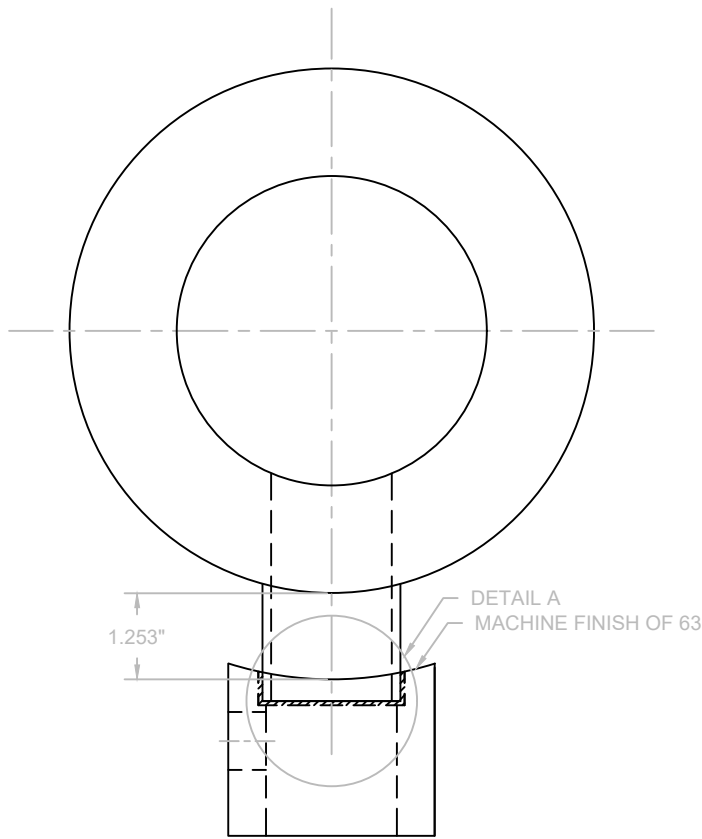
MATERIAL: CARBON STEEL

REV	DATE	BY	DESCRIPTION
1	21.06.25	MP	FOR QUOTATION
<small>THIS DOCUMENT CONTAINS CONFIDENTIAL AND PROPRIETARY INFORMATION THAT CANNOT BE REPRODUCED, DIVULGED, OR MANUFACTURED, IN WHOLE OR IN PART, WITHOUT WRITTEN AUTHORIZATION FROM VITAL INDUSTRIAL SOLUTIONS.</small>			
DESCRIPTION 4" 150# CONTAINMENT SYSTEM TOOL SPADE			
DWG. NO.	PART	SCALE	
CS-4-150	CS-4-150-SP	NTS	2 OF 3

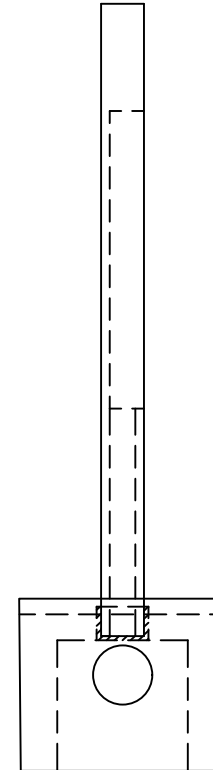




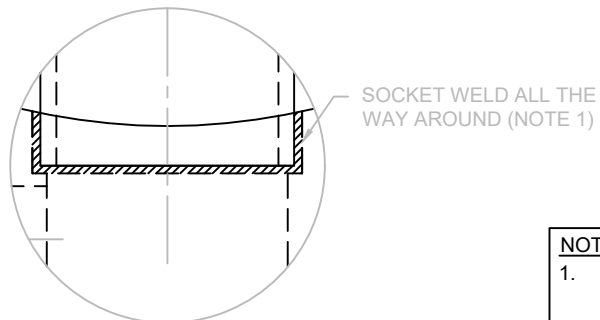
MATERIAL: CARBON STEEL			
1	21.06.25	MP	FOR QUOTATION
REV	DATE	BY	DESCRIPTION
THIS DOCUMENT CONTAINS CONFIDENTIAL AND PROPRIETARY INFORMATION THAT CANNOT BE REPRODUCED, DIVULGED, OR MANUFACTURED, IN WHOLE OR IN PART, WITHOUT WRITTEN AUTHORIZATION FROM VITAL INDUSTRIAL SOLUTIONS.			
DESCRIPTION			
4" 150# CONTAINMENT SYSTEM TOOL BLOCK			
DWG. NO.	PART	SCALE	SHEET
CS-4-150	CS-4-150-B	NTS	3 OF 3



TOP VIEW



SIDE VIEW



DETAIL A

**NOTES**

1. WELD MUST NOT PROTRUDE PAST RADIUS

MATERIAL: CARBON STEEL

REV	DATE	BY	DESCRIPTION
1	21.06.25	MP	FOR QUOTATION

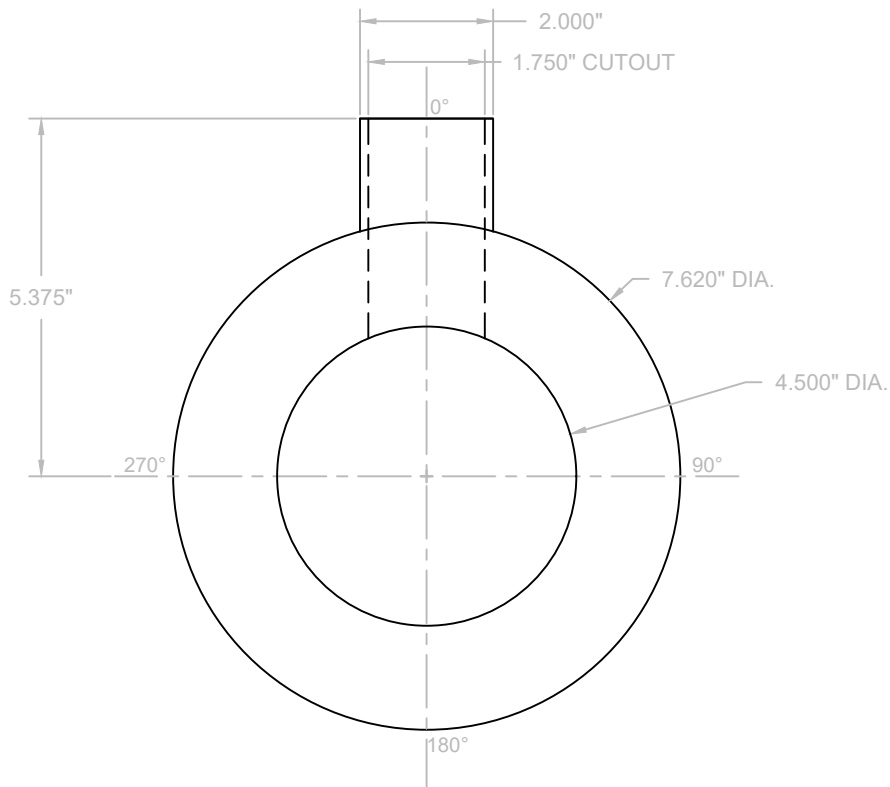
THIS DOCUMENT CONTAINS CONFIDENTIAL AND PROPRIETARY INFORMATION THAT CANNOT BE REPRODUCED, DIVULGED, OR MANUFACTURED, IN WHOLE OR IN PART, WITHOUT WRITTEN AUTHORIZATION FROM VITAL INDUSTRIAL SOLUTIONS.

**DESCRIPTION**

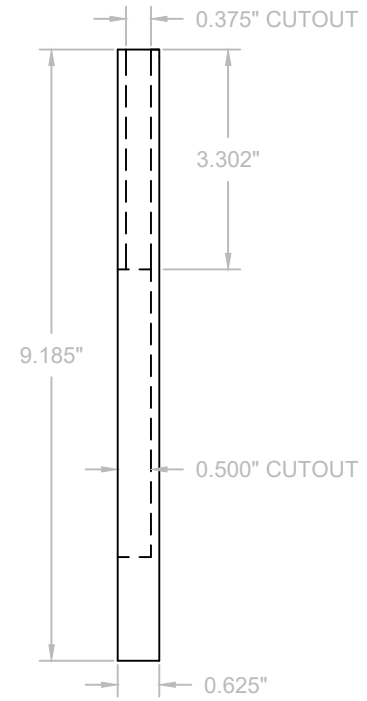
5" 150# CONTAINMENT SYSTEM TOOL ASSEMBLY



DWG. NO.	PART	SCALE	SHEET
CS-5-150	-	NTS	1 OF 3



**TOP VIEW**



**SIDE VIEW**

**MATERIAL: CARBON STEEL**

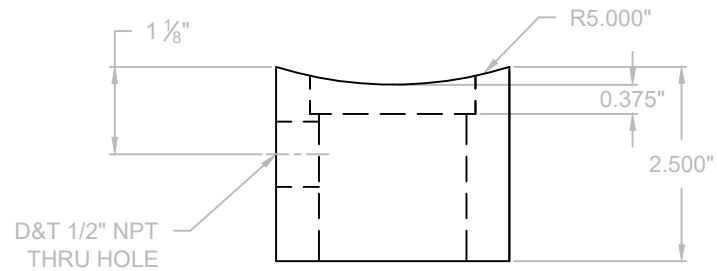
REV	DATE	BY	DESCRIPTION
1	21.06.25	MP	FOR QUOTATION

THIS DOCUMENT CONTAINS CONFIDENTIAL AND PROPRIETARY INFORMATION THAT CANNOT BE REPRODUCED, DIVULGED, OR MANUFACTURED, IN WHOLE OR IN PART, WITHOUT WRITTEN AUTHORIZATION FROM VITAL INDUSTRIAL SOLUTIONS.

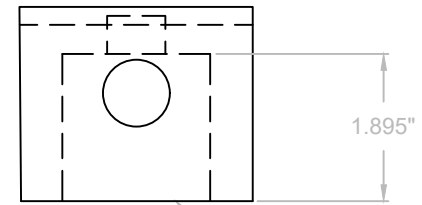
**DESCRIPTION**  
5" 150# CONTAINMENT  
SYSTEM TOOL SPADE



DWG. NO.	PART	SCALE	SHEET
CS-5-150	CS-5-150-SP	NTS	2 OF 3

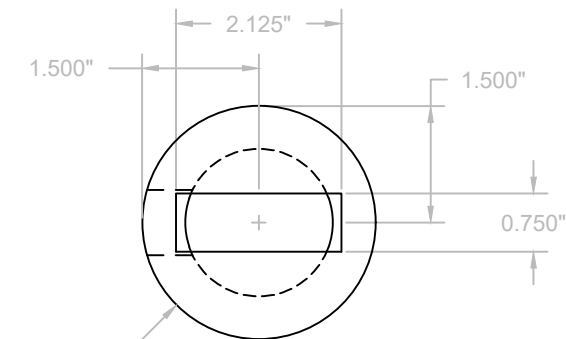


**TOP VIEW**




**SIDE VIEW**

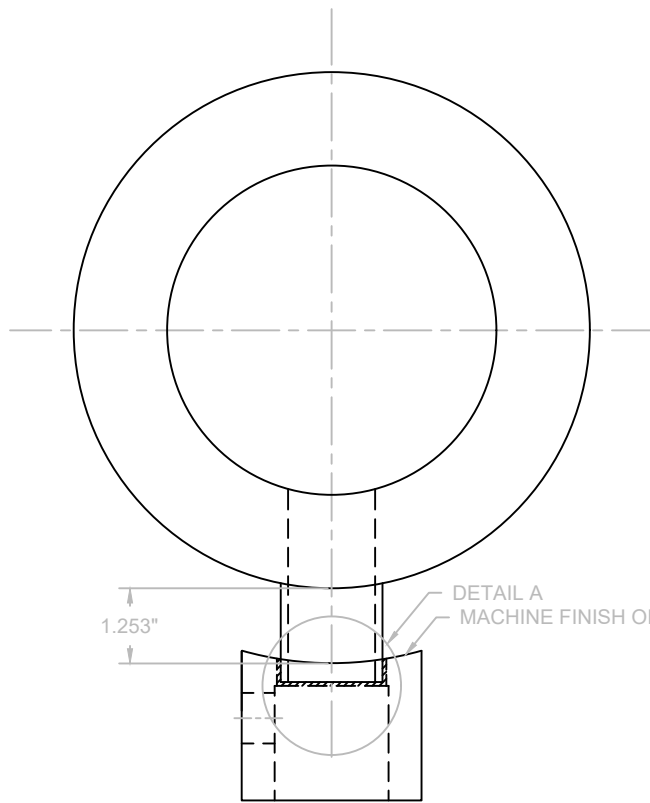
D&T 1.5" NPT x 15/16" DP



**END VIEW**

**MATERIAL: CARBON STEEL**

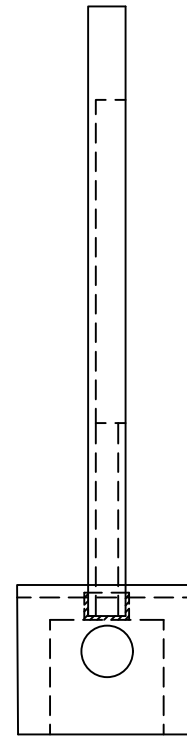
REV	DATE	BY	DESCRIPTION
1	21.06.25	MP	FOR QUOTATION
THIS DOCUMENT CONTAINS CONFIDENTIAL AND PROPRIETARY INFORMATION THAT CANNOT BE REPRODUCED, DIVULGED, OR MANUFACTURED, IN WHOLE OR IN PART, WITHOUT WRITTEN AUTHORIZATION FROM VITAL INDUSTRIAL SOLUTIONS.			
<b>DESCRIPTION</b>			
5" 150# CONTAINMENT SYSTEM TOOL BLOCK			
<b>DWG. NO.</b>	<b>PART</b>	<b>SCALE</b>	<b>SHEET</b>
CS-5-150	CS-5-150-B	NTS	3 OF 3



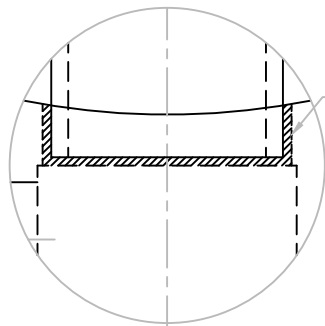
1.253"

DETAIL A  
MACHINE FINISH OF 63

TOP VIEW



SIDE VIEW



SOCKET WELD ALL  
THE WAY AROUND  
(NOTE 1)

DETAIL A

NOTES

1. WELD MUST NOT PROTRUDE PAST RADIUS

MATERIAL: CARBON STEEL

REV	DATE	BY	DESCRIPTION
1	21.06.25	MP	FOR QUOTATION

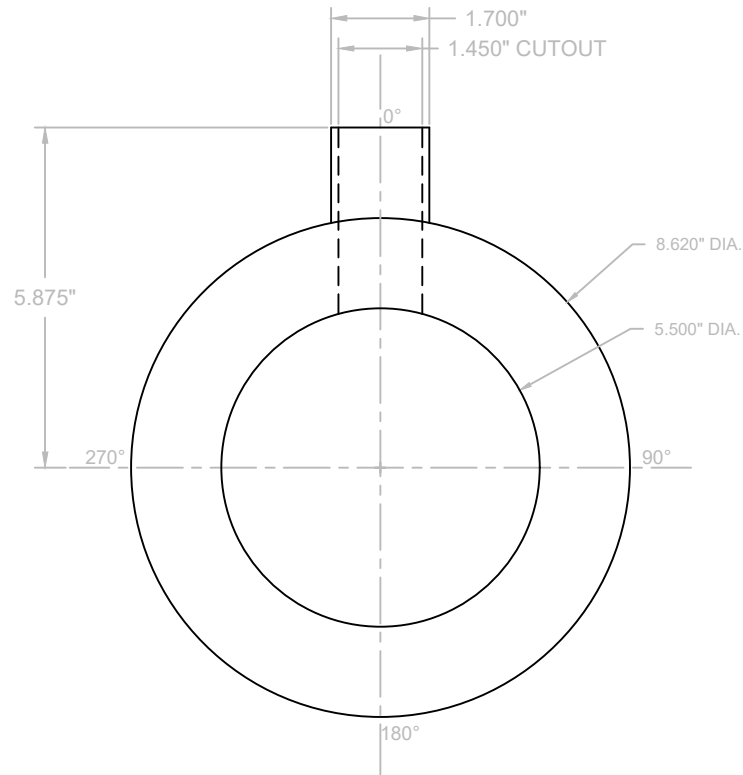
THIS DOCUMENT CONTAINS CONFIDENTIAL AND PROPRIETARY INFORMATION THAT CANNOT BE REPRODUCED, DIVULGED, OR MANUFACTURED, IN WHOLE OR IN PART, WITHOUT WRITTEN AUTHORIZATION FROM VITAL INDUSTRIAL SOLUTIONS.

DESCRIPTION

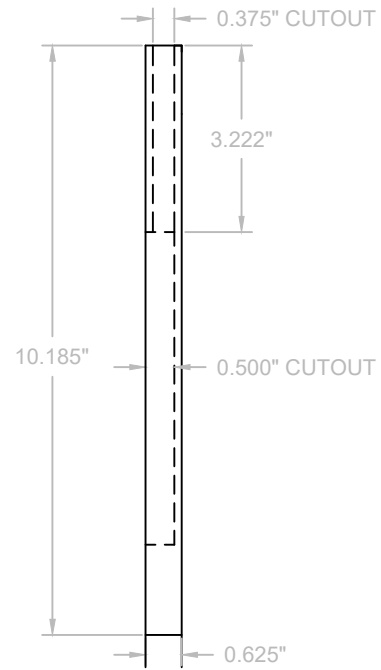
6" 150# CONTAINMENT  
SYSTEM TOOL ASSEMBLY



DWG. NO.	PART	SCALE	SHEET
CS-6-150	-	NTS	1 OF 3



**TOP VIEW**



**SIDE VIEW**

**MATERIAL: CARBON STEEL**

REV	DATE	BY	DESCRIPTION
1	21.06.25	MP	FOR QUOTATION

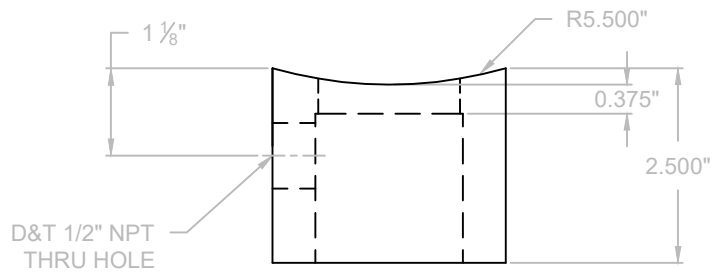
THIS DOCUMENT CONTAINS CONFIDENTIAL AND PROPRIETARY INFORMATION THAT CANNOT BE REPRODUCED, DIVULGED, OR MANUFACTURED, IN WHOLE OR IN PART, WITHOUT WRITTEN AUTHORIZATION FROM VITAL INDUSTRIAL SOLUTIONS.

**DESCRIPTION**

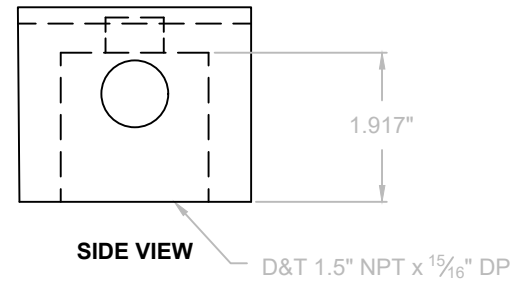
6" 150# CONTAINMENT  
SYSTEM TOOL SPADE



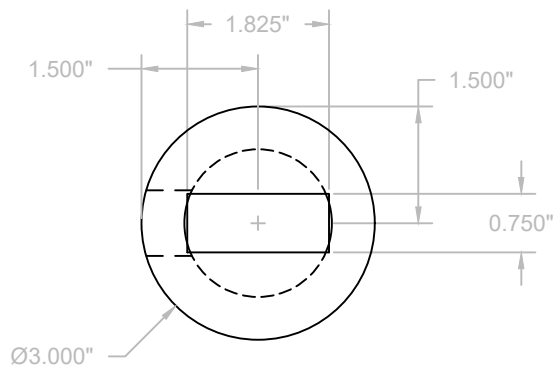
DWG. NO.	PART	SCALE	SHEET
CS-6-150	CS-6-150-SP	NTS	2 OF 3



**TOP VIEW**




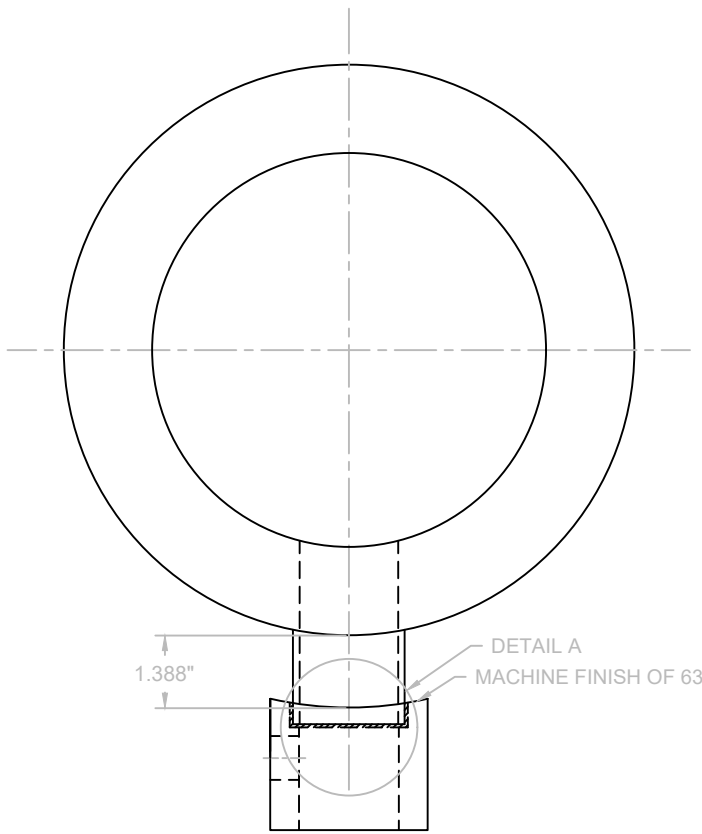
**SIDE VIEW**



**END VIEW**

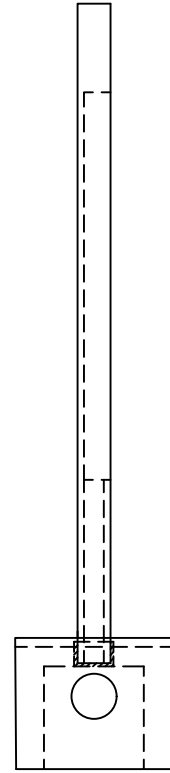
**MATERIAL: CARBON STEEL**

REV	DATE	BY	DESCRIPTION
1	21.06.25	MP	FOR QUOTATION
THIS DOCUMENT CONTAINS CONFIDENTIAL AND PROPRIETARY INFORMATION THAT CANNOT BE REPRODUCED, DIVULGED, OR MANUFACTURED, IN WHOLE OR IN PART, WITHOUT WRITTEN AUTHORIZATION FROM VITAL INDUSTRIAL SOLUTIONS.			
<b>DESCRIPTION</b>			
6" 150# CONTAINMENT SYSTEM TOOL BLOCK			
<b>DWG. NO.</b>	<b>PART</b>	<b>SCALE</b>	<b>SHEET</b>
CS-6-150	CS-6-150-B	NTS	3 OF 3

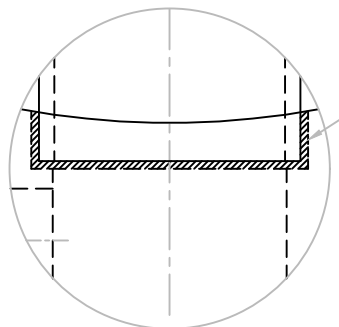


1.388"  
 DETAIL A  
 MACHINE FINISH OF 63

TOP VIEW



SIDE VIEW



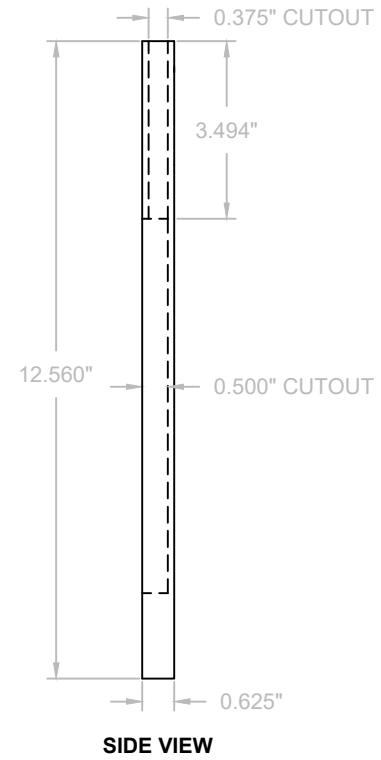
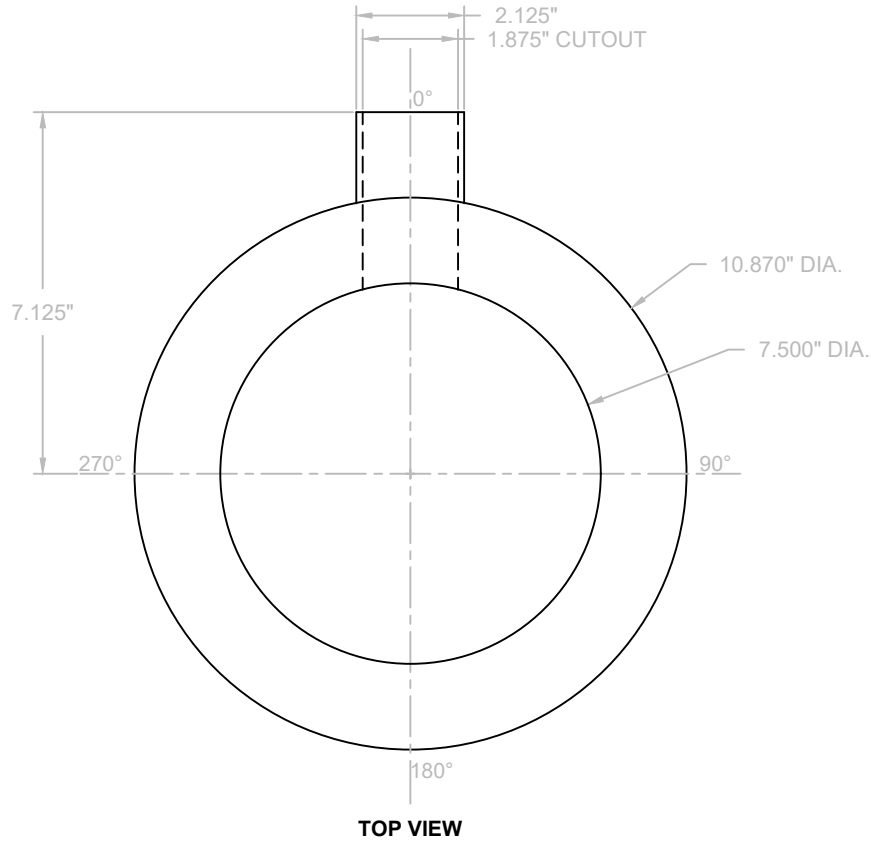
SOCKET WELD ALL THE WAY AROUND (NOTE 1)

DETAIL A


- NOTES**
1. WELD MUST NOT PROTRUDE PAST RADIUS

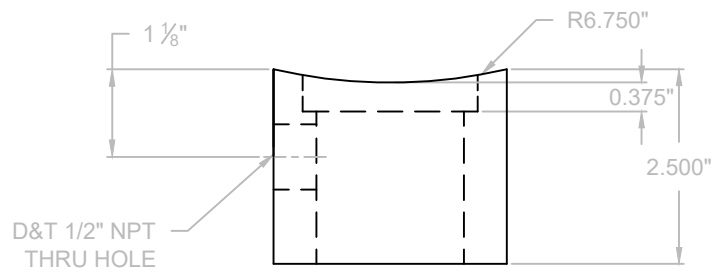
<b>MATERIAL: CARBON STEEL</b>			
1	21.06.25	MP	FOR QUOTATION
REV	DATE	BY	DESCRIPTION
<small>THIS DOCUMENT CONTAINS CONFIDENTIAL AND PROPRIETARY INFORMATION THAT CANNOT BE REPRODUCED, DIVULGED, OR MANUFACTURED, IN WHOLE OR IN PART, WITHOUT WRITTEN AUTHORIZATION FROM VITAL INDUSTRIAL SOLUTIONS.</small>			
<b>DESCRIPTION</b>			
8" 150# CONTAINMENT SYSTEM TOOL ASSEMBLY			
<u>DWG. NO.</u>	<u>PART</u>	<u>SCALE</u>	<u>SHEET</u>
CS-8-150	-	NTS	1 OF 3



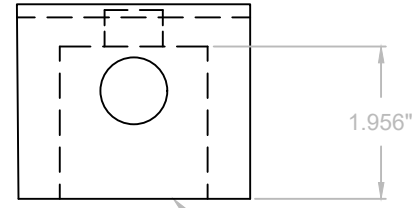


MATERIAL: CARBON STEEL

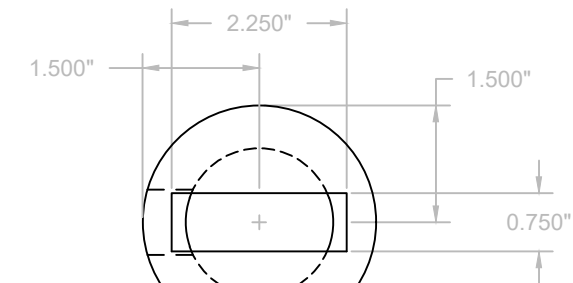
REV	DATE	BY	DESCRIPTION
1	21.06.25	MP	FOR QUOTATION
THIS DOCUMENT CONTAINS CONFIDENTIAL AND PROPRIETARY INFORMATION THAT CANNOT BE REPRODUCED, DIVULGED, OR MANUFACTURED, IN WHOLE OR IN PART, WITHOUT WRITTEN AUTHORIZATION FROM VITAL INDUSTRIAL SOLUTIONS.			
DESCRIPTION			
8" 150# CONTAINMENT SYSTEM TOOL SPADE			
DWG. NO.	PART	SCALE	SHEET
CS-8-150	CS-8-150-SP	NTS	2 OF 3



**TOP VIEW**




**SIDE VIEW**

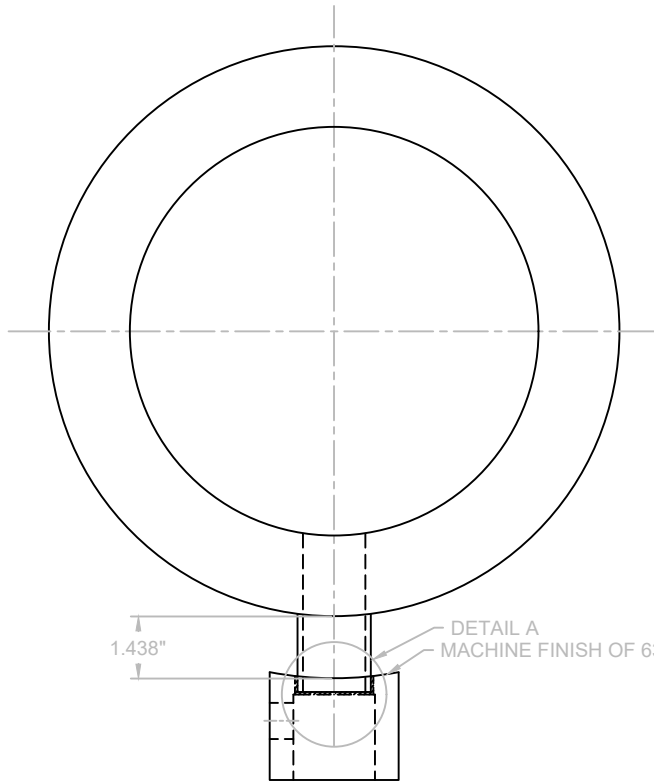


**END VIEW**

D&T 1.5" NPT x 15/16" DP

**MATERIAL: CARBON STEEL**

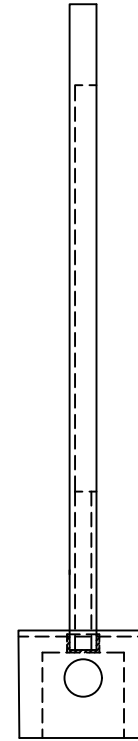
REV	DATE	BY	DESCRIPTION
1	21.06.25	MP	FOR QUOTATION
THIS DOCUMENT CONTAINS CONFIDENTIAL AND PROPRIETARY INFORMATION THAT CANNOT BE REPRODUCED, DIVULGED, OR MANUFACTURED, IN WHOLE OR IN PART, WITHOUT WRITTEN AUTHORIZATION FROM VITAL INDUSTRIAL SOLUTIONS.			
<b>DESCRIPTION</b>			
8" 150# CONTAINMENT SYSTEM TOOL BLOCK			
<b>DWG. NO.</b>	<b>PART</b>	<b>SCALE</b>	<b>SHEET</b>
CS-8-150	CS-8-150-B	NTS	3 OF 3



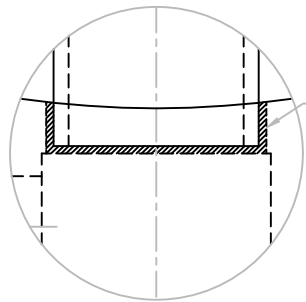
1.438"

DETAIL A  
MACHINE FINISH OF 63

TOP VIEW



SIDE VIEW



DETAIL A

SOCKET WELD ALL  
THE WAY AROUND  
(NOTE 1)

**NOTES**

1. WELD MUST NOT PROTRUDE PAST RADIUS

MATERIAL: CARBON STEEL

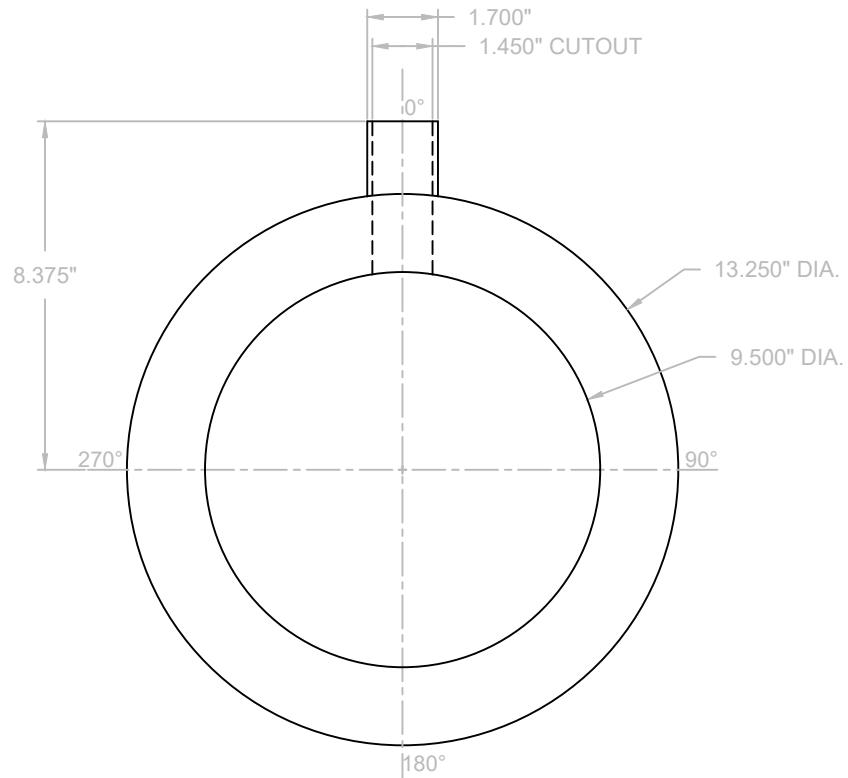
1	21.06.25	MP	FOR QUOTATION
REV	DATE	BY	DESCRIPTION

THIS DOCUMENT CONTAINS CONFIDENTIAL AND PROPRIETARY INFORMATION THAT CANNOT BE REPRODUCED, DIVULGED, OR MANUFACTURED, IN WHOLE OR IN PART, WITHOUT WRITTEN AUTHORIZATION FROM VITAL INDUSTRIAL SOLUTIONS.

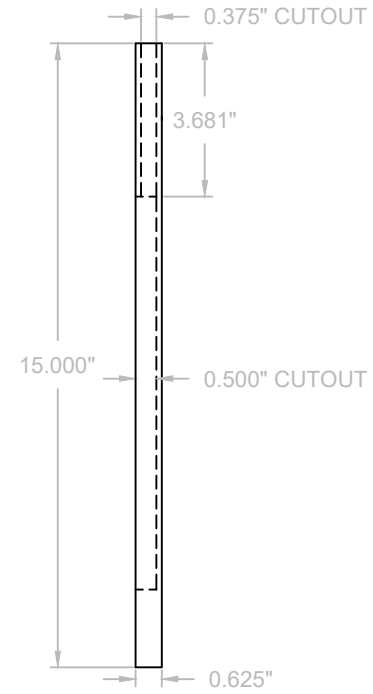
**DESCRIPTION**  
10" 150# CONTAINMENT  
SYSTEM TOOL ASSEMBLY



DWG. NO.	PART	SCALE	SHEET
CS-10-150	-	NTS	1 OF 3




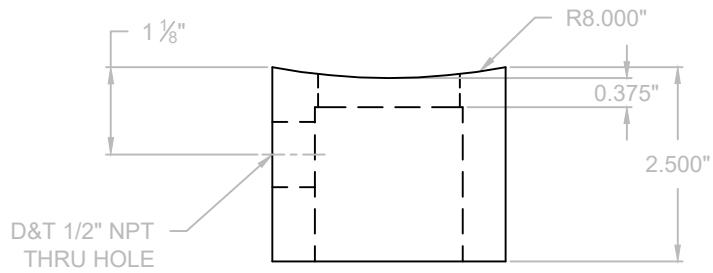
TOP VIEW



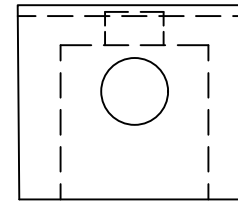
SIDE VIEW

MATERIAL: CARBON STEEL

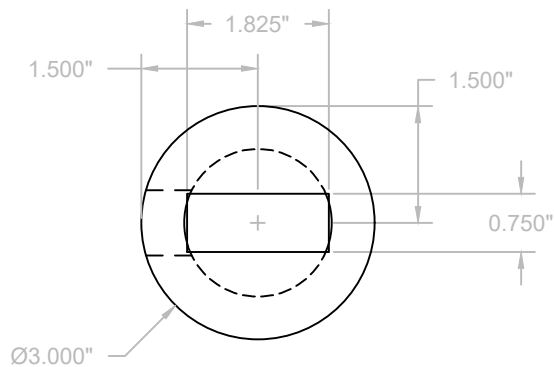
REV	DATE	BY	DESCRIPTION
1	21.06.25	MP	FOR QUOTATION
THIS DOCUMENT CONTAINS CONFIDENTIAL AND PROPRIETARY INFORMATION THAT CANNOT BE REPRODUCED, DIVULGED, OR MANUFACTURED, IN WHOLE OR IN PART, WITHOUT WRITTEN AUTHORIZATION FROM VITAL INDUSTRIAL SOLUTIONS.			
DESCRIPTION			
10" 150# CONTAINMENT SYSTEM TOOL SPADE			
DWG. NO.	PART	SCALE	SHEET
CS-10-150	CS-10-150-SP	NTS	2 OF 3



**TOP VIEW**

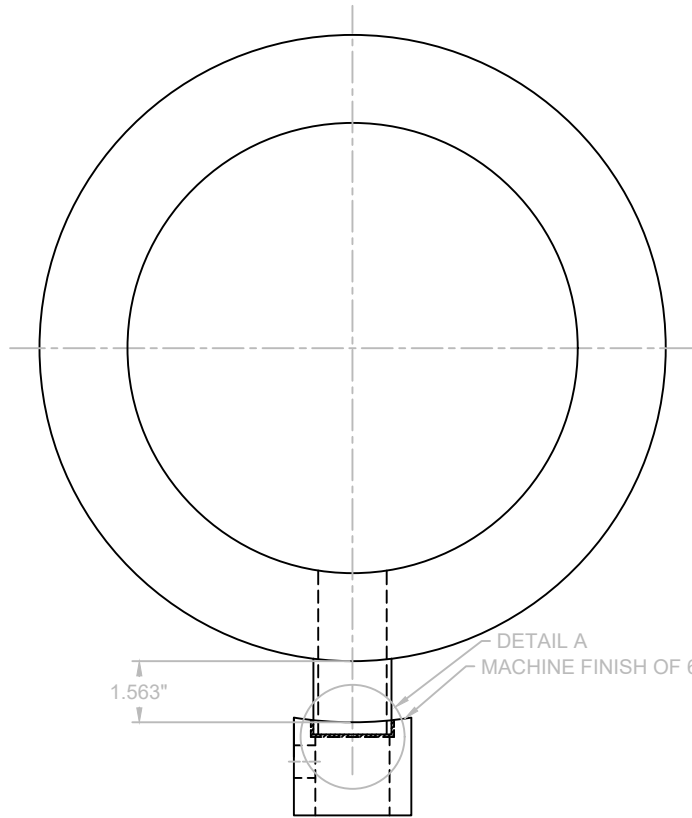


**SIDE VIEW**



**END VIEW**

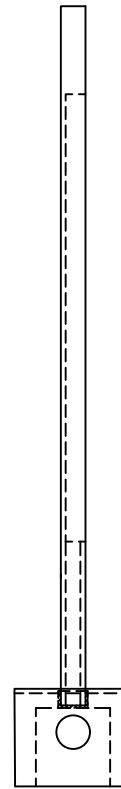
MATERIAL: CARBON STEEL			
1	21.06.25	MP	FOR QUOTATION
REV	DATE	BY	DESCRIPTION
THIS DOCUMENT CONTAINS CONFIDENTIAL AND PROPRIETARY INFORMATION THAT CANNOT BE REPRODUCED, DIVULGED, OR MANUFACTURED, IN WHOLE OR IN PART, WITHOUT WRITTEN AUTHORIZATION FROM VITAL INDUSTRIAL SOLUTIONS.			
DESCRIPTION			
10" 150# CONTAINMENT SYSTEM TOOL BLOCK			
DWG. NO.	PART	SCALE	SHEET
CS-10-150	CS-10-150-B	NTS	3 OF 3



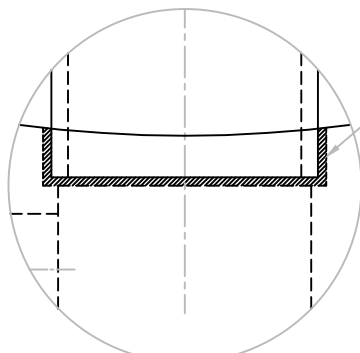
1.563"

DETAIL A  
MACHINE FINISH OF 63

TOP VIEW



SIDE VIEW

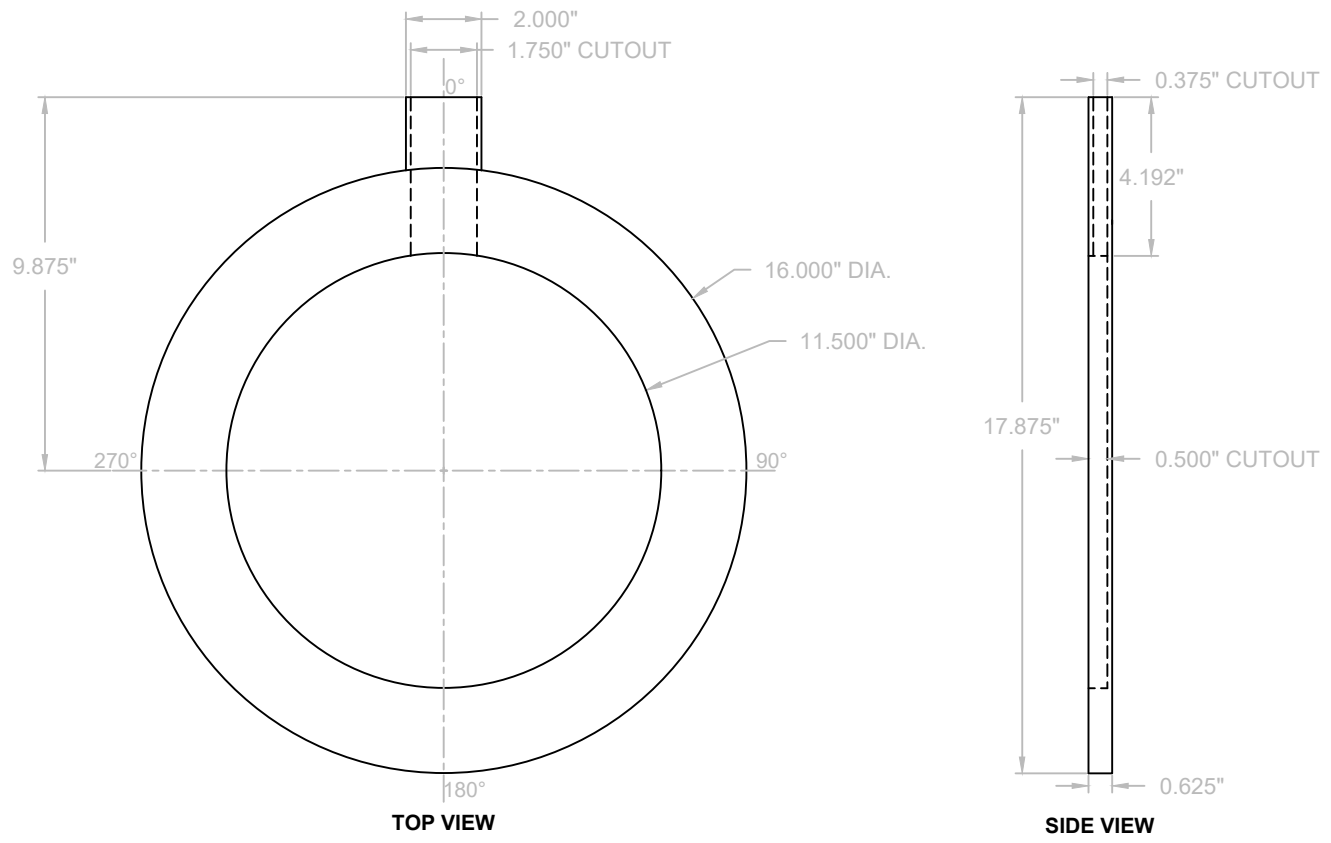



SOCKET WELD ALL THE WAY AROUND (NOTE 1)

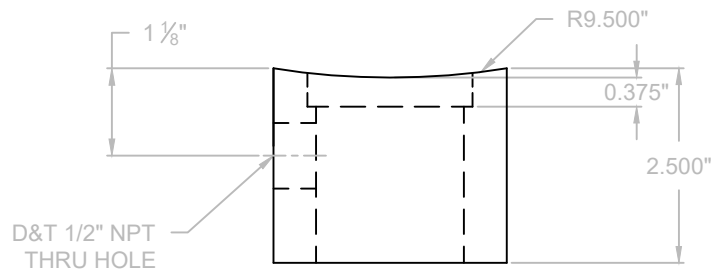
DETAIL A

- NOTES**
1. WELD MUST NOT PROTRUDE PAST RADIUS

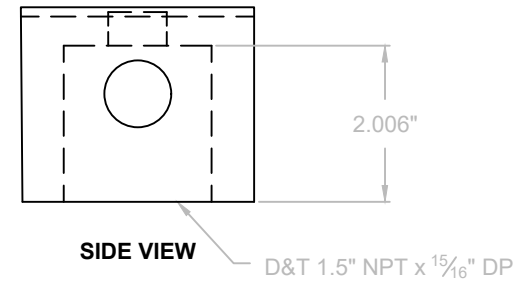
<b>MATERIAL: CARBON STEEL</b>			
1	21.06.25	MP	FOR QUOTATION
REV	DATE	BY	DESCRIPTION
<small>THIS DOCUMENT CONTAINS CONFIDENTIAL AND PROPRIETARY INFORMATION THAT CANNOT BE REPRODUCED, DIVULGED, OR MANUFACTURED, IN WHOLE OR IN PART, WITHOUT WRITTEN AUTHORIZATION FROM VITAL INDUSTRIAL SOLUTIONS.</small>			
<b>DESCRIPTION</b>			
12" 150# CONTAINMENT SYSTEM TOOL ASSEMBLY			
<u>DWG. NO.</u>	<u>PART</u>	<u>SCALE</u>	<u>SHEET</u>
CS-12-150	-	NTS	1 OF 3



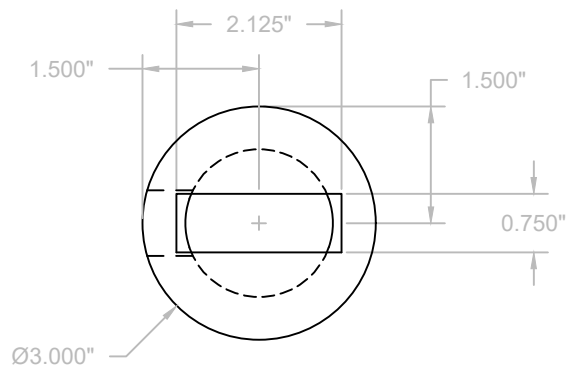
<b>MATERIAL: CARBON STEEL</b>			
1	21.06.25	MP	FOR QUOTATION
<u>REV</u>	<u>DATE</u>	<u>BY</u>	<u>DESCRIPTION</u>
<small>THIS DOCUMENT CONTAINS CONFIDENTIAL AND PROPRIETARY INFORMATION THAT CANNOT BE REPRODUCED, DIVULGED, OR MANUFACTURED, IN WHOLE OR IN PART, WITHOUT WRITTEN AUTHORIZATION FROM VITAL INDUSTRIAL SOLUTIONS.</small>			
<u>DESCRIPTION</u>			
12" 150# CONTAINMENT SYSTEM TOOL SPADE			
<u>DWG. NO.</u>	<u>PART</u>	<u>SCALE</u>	<u>SHEET</u>
CS-12-150	CS-12-150-SP	NTS	2 OF 3



**TOP VIEW**



**SIDE VIEW**



**END VIEW**

**MATERIAL: CARBON STEEL**

REV	DATE	BY	DESCRIPTION
1	21.06.25	MP	FOR QUOTATION
THIS DOCUMENT CONTAINS CONFIDENTIAL AND PROPRIETARY INFORMATION THAT CANNOT BE REPRODUCED, DIVULGED, OR MANUFACTURED, IN WHOLE OR IN PART, WITHOUT WRITTEN AUTHORIZATION FROM VITAL INDUSTRIAL SOLUTIONS.			
<b>DESCRIPTION</b>			
12" 150# CONTAINMENT SYSTEM TOOL BLOCK			
<b>DWG. NO.</b>	<b>PART</b>	<b>SCALE</b>	<b>SHEET</b>
CS-12-150	CS-12-150-B	NTS	3 OF 3